

Datasheet for **IR67-227**
anti-MMP2 antibody

Package size: 25, 100 μ l
Store at: -20°C
MW (kDa): 55-72

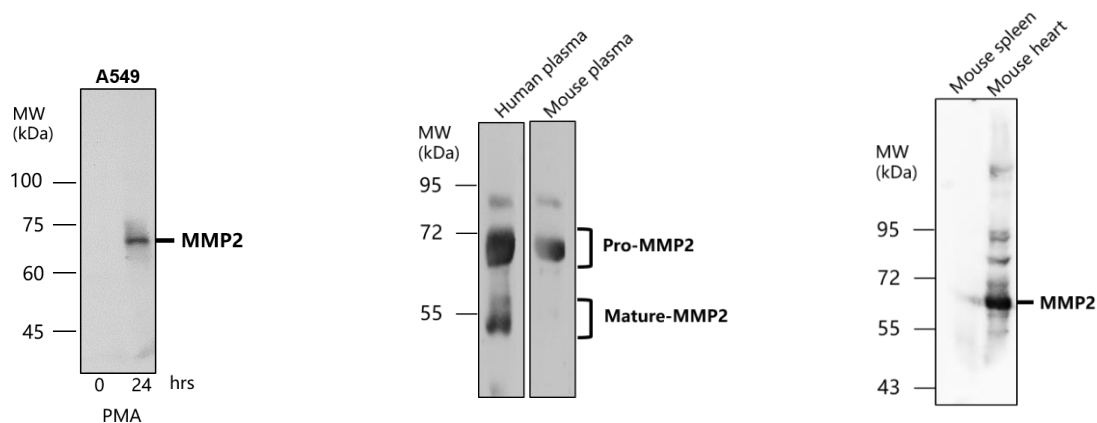
Overview

Product Name	MMP2 antibody
Product Number	IR67-227
Gene Description	matrix metalloproteinase 2
Clonality	Polyclonal
Host	Rabbit
Species Reactivity	Human, mouse, rat
Recommended Applications Dilutions	Western Blot 1:500 Immunofluorescence 1:100 – 1:200 Immunohistochemistry (Paraffin) 1:50 – 1:100
Storage Buffer	100mM Tris Glycine, 1% BSA, 20% Glycerol (pH7). 0.025% ProClin 300 was added as a preservative
Concentration	0.21 mg/ml
Purity	Affinity column purified
Storage	Store at +4°C for short term storage. Long time storage is recommended at -20°C
Notes	Gently mix before use. Optimal concentrations and conditions for each application should be determined by the user.

IR67-227 anti- MMP2 antibody WB image

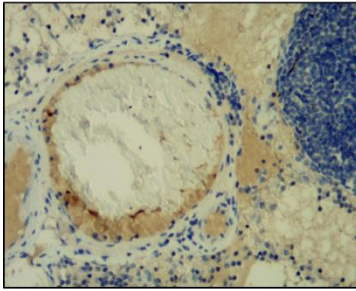
MMP2 antibody at 1/500 dilution.

Lysates at 60 μ g per lane, This blot was produced using a 7.5% SDS-PAGE. Nitrocellulose membrane was then blocked with 3% BSA for an hour before being incubated with IR67-227 overnight at 4°C.

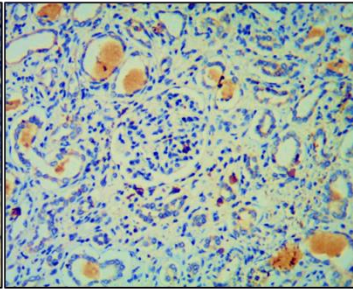


Image

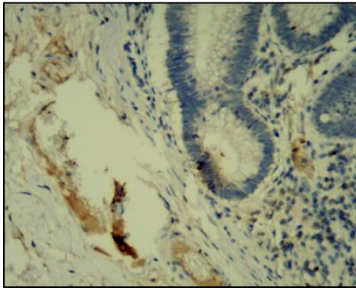
Breast carcinoma



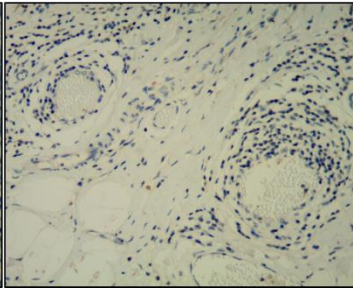
Kidney carcinoma



Colorectal carcinoma



Liver carcinoma



IR67-227 anti- MMP2 antibody IHC image

Immunohistochemical analysis of paraffin embedded Human kidney, breast, colorectal and liver cancer tissue labeling MMP2 with IR67-227 at 1/50.

