

Catalog Number: IR101-420

## Anti-cleaved PARP (Asp214) antibody

Package size: 25, 100  $\mu$ l  
Store at: -20°C  
MW (kDa): 89, 115

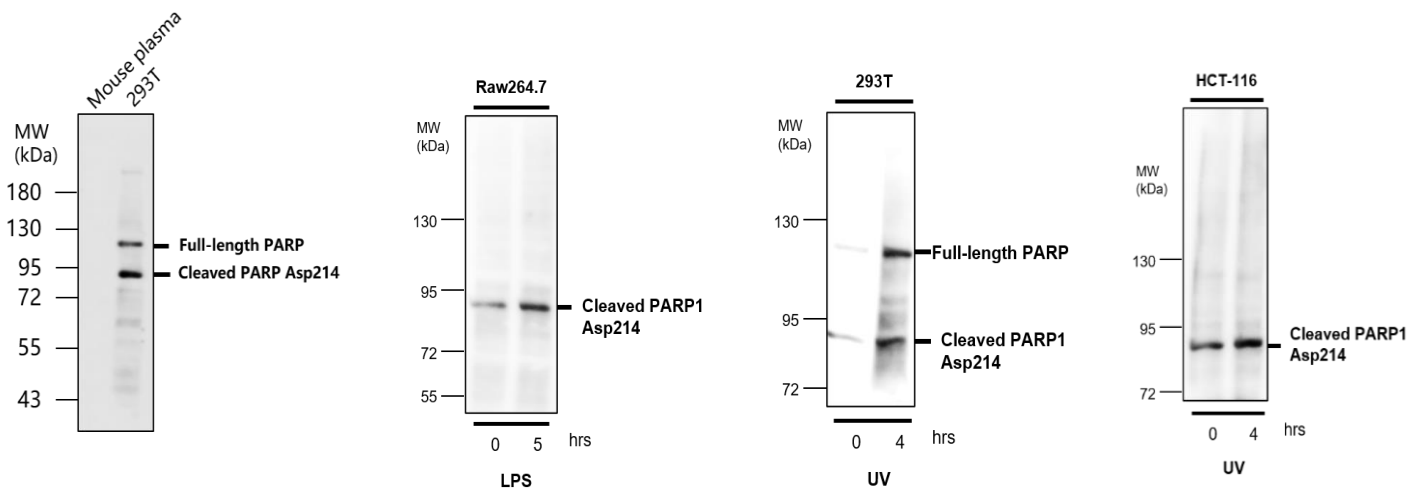
### Overview

Product Name	cleaved PARP (Asp214) antibody
Product Number	IR101-420
Gene Description	poly (ADP-ribose) polymerase 1
Clonality	Polyclonal
Host	Rabbit
Species Reactivity	Human, mouse, rat
Recommended Applications Dilutions	Western Blot 1:500 – 1:1000 Immunofluorescence 1:100 – 1:300 Immunohistochemistry (Paraffin) 1:100 – 1:150
Storage Buffer	100mM Tris Glycine, 1% BSA, 20% Glycerol (pH7). 0.025% ProClin 300 was added as a preservative
Concentration	0.4 mg/ml
Purity	Affinity column purified
Storage	Store at +4°C for short term storage. Long time storage is recommended at -20°C
Notes	Gently mix before use. Optimal concentrations and conditions for each application should be determined by the user.

### IR101-420 anti-PARP cleaved antibody WB image

**Anti-PARP celaved antibody - at 1/500 dilution.** Lysates/proteins at 40  $\mu$ g per lane.

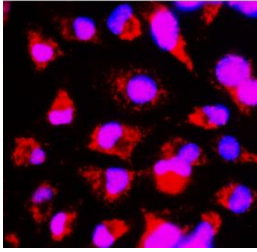
This blot was produced using a 5% and 7.5% SDS-PAGE. The gel was run at 140V for 50 minutes before being transferred onto a Nitrocellulose membrane was then blocked an hour before being incubated with IR101-420 overnight at 4°C.



## Image

### IR101-420 anti-PARP cleaved antibody ICC/IF image

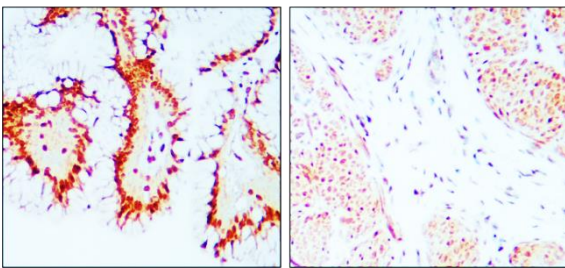
DBTRG-05MG



Immunofluorescence: cells were fixed with 4% paraformaldehyde for 10 min at RT, permeabilized with 0.1% NP-40 for 10 min at RT then blocked with 5% BSA for 30 min at room temperature. Cells were stained with IR101-420 anti- PARP cleaved antibody (red) at 1:200 and 4°C. DAPI (blue) was used as the nuclear counter stain.

### IR101-420 anti-PARP cleaved antibody IHC image

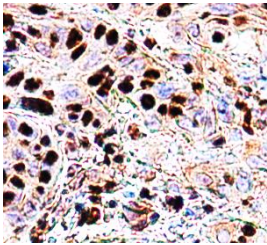
Gastric carcinoma



Immunohistochemical analysis of paraffin embedded Human cancer tissue labeling PARP1 cleaved with IR101-420 at 1/100.

## Customer feedback Image

### IR101-420 anti-PARP cleaved antibody IHC image



Immunohistochemical analysis of paraffin embedded Human oral carcinoma labeling PARP1 cleaved with IR101-420 at 1/150.

IReal Biotechnology Co., Ltd.

 **iReal Antibodies**



**ISO 13485:2016 Quality  
Management System  
Certified**

 [www.irealbio.com](http://www.irealbio.com)

 03-5260005

 [irealbio@irealbio.com](mailto:irealbio@irealbio.com)