

Catalog Number: IR1-2

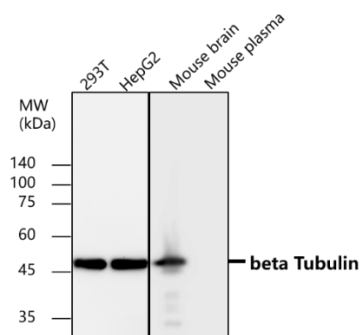
## Anti-Beta Tubulin antibody

Package size: 25,100  $\mu$ l  
Store at: -20°C  
MW (kDa): 50

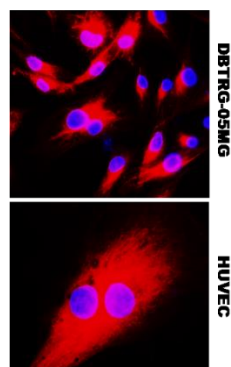
### Overview

<b>Product Name</b>	<b>Beta tubulin antibody</b>
<b>Product Number</b>	<b>IR1-2</b>
<b>Gene Description</b>	tubulin, beta class I
<b>Clonality</b>	Polyclonal
<b>Host</b>	Rabbit
<b>Species Reactivity</b>	Human, mouse, rat
<b>Recommended Applications Dilutions</b>	Western Blot 1:5000 - 1:10000 Immunofluorescence 1:200 – 1:500
<b>Storage Buffer</b>	100mM Tris Glycine, 20% Glycerol (pH7). 0.025% ProClin 300 was added as a preservative
<b>Concentration</b>	0.92 mg/ml
<b>Purity</b>	Affinity column purified
<b>Storage</b>	Store at +4°C for short term storage. Long time storage is recommended at -20°C
<b>Notes</b>	Gently mix before use. Optimal concentrations and conditions for each application should be determined by the user.

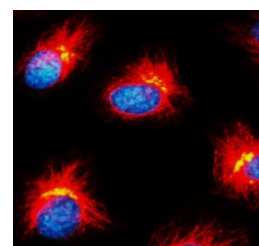
#### IR1-2 anti-beta Tubulin antibody WB image



#### IR1-2 anti-beta Tubulin antibody ICC/IF image



#### Customer feedback Image IR1-2 anti-beta Tubulin antibody ICC/IF image



#### Anti-beta Tubulin antibody - at 1/5000 dilution

Lysates at 30  $\mu$ g per lane. This blot was produced using a 10% SDS-PAGE. The Nitrocellulose membrane was then blocked for an hour before being incubated with IR1-2 overnight at 4°C.

Immunofluorescence: cells were fixed with 4% paraformaldehyde for 10 min at RT, permeabilized with 0.1% NP-40 for 10 min at RT then blocked with 5% BSA for 30 min at room temperature. Cells were stained with IR1-2 anti-beta Tubulin antibody (red) at 1:600 and 4°C.

Immunofluorescent analysis.  
Sample : HeLa cells  
Red : Beta Tubulin (IR1-2) : 1-400  
DAPI (blue) was used as the nuclear counter stain.  
Fixed : ice-cold MeOH for 5 min.

IReal Biotechnology Co., Ltd.