

Catalog Number: IR39-123

Anti-Tau antibody

Package size: 25, 100 μ l

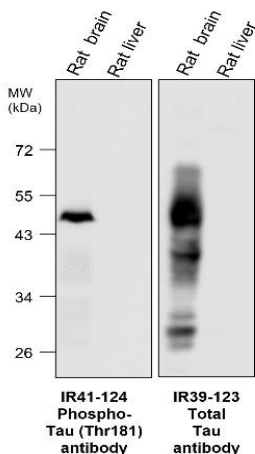
Store at: -20°C

MW (kDa): 25 to 70

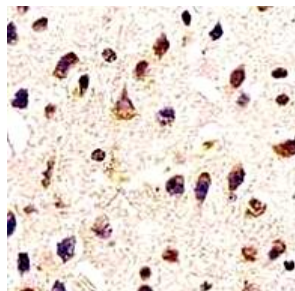
Overview

Product Name	Tau antibody
Product Number	IR39-123
Gene Description	microtubule-associated protein tau
Clonality	Polyclonal
Host	Rabbit
Species Reactivity	Human, mouse, rat
Recommended Applications Dilutions	Western Blot 1:3000 – 1:5000 Immunofluorescence 1:200 – 1:500 Immunohistochemistry (Paraffin) 1:200 – 1:300 Immunohistochemistry (Frozen) 1:200 – 1:400
Storage Buffer	100mM Tris Glycine, 20% Glycerol (pH7). 0.025% ProClin 300 was added as a preservative
Concentration	1.12 mg/ml
Purity	Affinity column purified
Storage	Store at +4°C for short term storage. Long time storage is recommended at -20°C
Notes	Gently mix before use. Optimal concentrations and conditions for each application should be determined by the user.

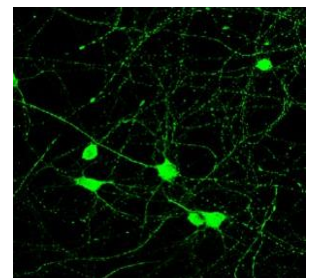
IR39-123 anti-Tau antibody
WB image



IR39-123 anti-Tau antibody
IHC image



IR39-123 anti-Tau antibody
IF image



Anti-Tau antibody

Lysates at 40 μ g per lane.

This blot was produced using a 10% SDS-PAGE. Nitrocellulose membrane was then blocked for an hour before being incubated with IR39-123 overnight at 4°C.

Immunohistochemical analysis of paraffin embedded Human astrogloma tissue labeling Tau with IR39-123 at 1/300.

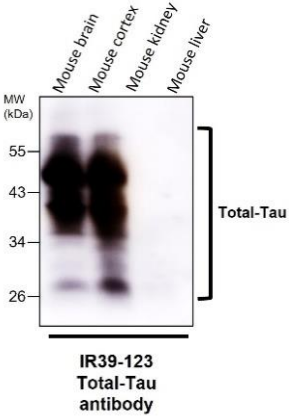
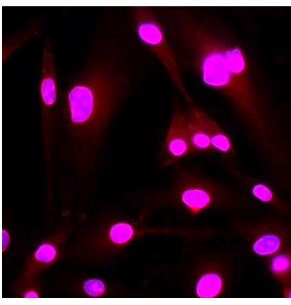
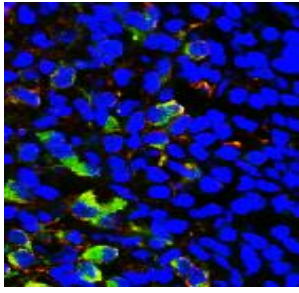
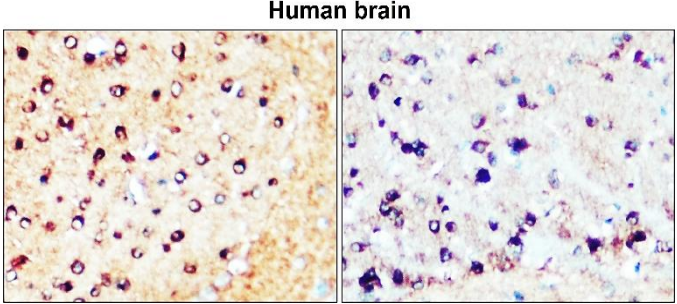
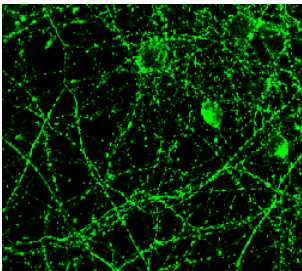
Immunofluorescent analysis.

Sample : primary cortical neurons

Tau antibody (IR39-123) : 1-300

Anti-rabbit 488 : 1-500

Fixed : 4% paraformaldehyde at RT for 20 min.

IR39-123 anti-Tau antibody WB image	IR39-123 anti-Tau antibody ICC/IF image	IR39-123 anti-Tau antibody IHC image
 <p>Mouse brain Mouse cortex Mouse kidney Mouse liver</p> <p>MW (kDa) 55 43 34 26</p> <p>Total-Tau</p> <p>IR39-123 Total-Tau antibody</p>	 <p>DBTRG-05MG</p>	
<p>All lanes : Anti-Tau antibody Lysates/proteins at 45 µg per lane. This blot was produced using a 10% SDS-PAGE. Nitrocellulose membrane was then blocked for an hour before being incubated with IR39-123 overnight at 4°C.</p>	<p>Immunofluorescence: cells were fixed with 4% paraformaldehyde for 10 min at RT, permeabilized with 0.1% NP-40 for 10 min at RT then blocked with 5% BSA for 30 min at room temperature. Cells were stained with IR39-123 anti-Tau antibody (red) at 1:200 and 4°C. DAPI (blue) was used as the nuclear counter stain.</p>	<p>Immunohistochemical of frozen sections. Sample : mouse cerebellum. Green : Tau antibody (IR39-123) : 1-300 Anti-rabbit 488 : 1-500 DAPI (blue) was used as the nuclear counter stain.</p>
IR39-123 anti-Tau antibody IHC image		IR39-123 anti-Tau antibody IF image
 <p>Human brain</p>		
<p>Immunohistochemical analysis of paraffin embedded Human brain tissue labeling Tau with IR39-123 at 1/200.</p>		<p>Immunofluorescent analysis. Sample : primary cortical neurons Tau antibody (IR39-123) : 1-300 Anti-rabbit 488 : 1-500 Fixed : 4% paraformaldehyde at RT for 20 min.</p>

IReal Biotechnology Co., Ltd.

 **iReal Antibodies**



**ISO 13485:2016 Quality
Management System
Certified**

 www.irealbio.com

 03-5260005

 irealbio@irealbio.com