

Catalog Number: IR43-128

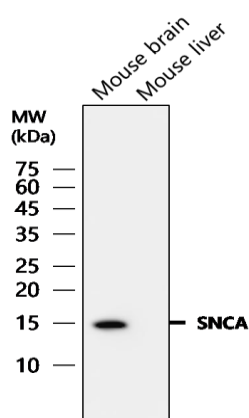
## Anti-alpha Synuclein / SNCA antibody

Package size: 25, 100  $\mu$ l  
Store at: -20°C  
MW (kDa): 15

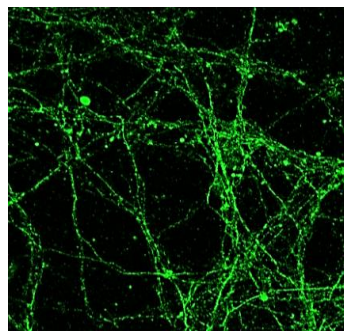
### Overview

<b>Product Name</b>	alpha Synuclein / SNCA antibody
<b>Product Number</b>	IR43-128
<b>Gene Description</b>	synuclein, alpha
<b>Clonality</b>	Polyclonal
<b>Host</b>	Rabbit
<b>Species Reactivity</b>	Human, mouse, rat
<b>Recommended Applications Dilutions</b>	Western Blot 1:500 - 1:1000 Immunofluorescence 1:200 – 1:300 Immunohistochemistry (Frozen) 1:100 – 1:200
<b>Storage Buffer</b>	100mM Tris Glycine, 20% Glycerol (pH7). 0.025% ProClin 300 was added as a preservative
<b>Concentration</b>	1 mg/ml
<b>Purity</b>	Affinity column purified
<b>Storage</b>	Store at +4°C for short term storage. Long time storage is recommended at -20°C
<b>Notes</b>	Gently mix before use. Optimal concentrations and conditions for each application should be determined by the user.

IR43-128 anti-alpha Synuclein antibody WB image



Customer feedback Image  
IR43-128 anti-alpha Synuclein antibody IF image



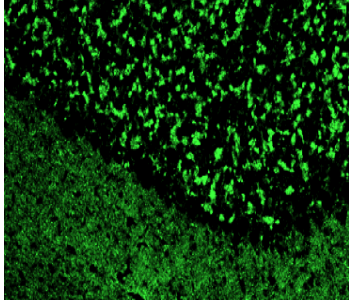
#### Anti-alpha Synuclein / SNCA antibody - 1/700 dilution

Lysates at 60  $\mu$ g per lane  
This blot was produced using a 12% SDS-PAGE. The Nitrocellulose membrane was then blocked for an hour before being incubated with IR43-128 overnight at 4°C.

#### Immunofluorescent analysis.

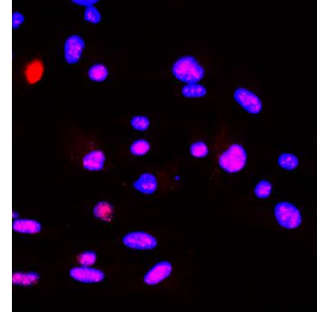
Sample: primary cortical neurons  
alpha Synuclein (IR43-128) : 1-400  
Anti-rabbit 488: 1-500  
Fixed: 4% paraformaldehyde at RT for 20 min.

Customer feedback Image  
IR43-128 anti-alpha Synuclein antibody IHC image



IR43-128 anti-alpha Synuclein antibody ICC/IF image

**DBTRG-05MG**



**Immunohistochemical of frozen sections.**

sample : mouse cerebellum.  
alpha Synuclein (IR43-128) : 1-400  
Anti-rabbit 488 : 1-500

Immunofluorescence: cells were fixed with 4% paraformaldehyde for 10 min at RT, permeabilized with 0.1% NP-40 for 10 min at RT then blocked with 5% BSA for 30 min at room temperature. Cells were stained with IR43-128 anti-alpha Synuclein antibody (red) at 1:200 and 4°C. DAPI (blue) was used as the nuclear counter stain.