

Catalog Number: IRM001

Anti-Alpha Tubulin monoclonal antibody

Package size: 100 μ l
Store at: -20°C
MW (kDa): 50

Overview

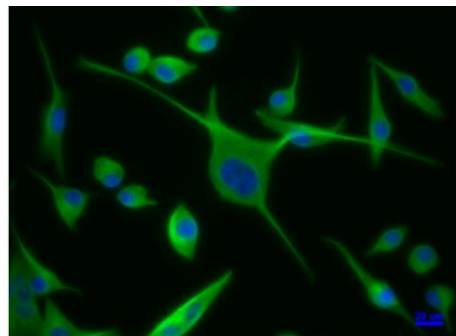
Product Name	Alpha tubulin monoclonal antibody
Product Number	<u>IRM001</u>
Gene Description	tubulin, alpha class I
Clonality	Monoclonal
Host	Mouse
Isotype	IgG1
Species Reactivity	Human, mouse, rat
Recommended Applications Dilutions	Western Blot 1:3000 - 1:6000 Immunofluorescence 1:200 - 1:500 ELISA 1:10000 - 1:20000
Storage Buffer	50mM Tris Glycine, 40% Glycerol (pH7.4). 0.025% ProClin 300 was added as a preservative
Concentration	1 mg/ml
Purity	Affinity column purified
Storage	Long time storage is recommended at -20°C. Avoid repeated freeze/thaw cycles.
Notes	Gently mix before use. Optimal concentrations and conditions for each application should be determined by the user.

IRM001 anti-alpha Tubulin monoclonal antibody WB image



alpha Tubulin monoclonal antibody - 1/3000 dilution
Lysates at 30 μ g per lane
This blot was produced using a 10% SDS-PAGE. Nitrocellulose membrane was then blocked for an hour before being incubated with IRM001 overnight at 4°C.

IRM001 anti-alpha Tubulin monoclonal antibody ICC/IF image



Immunofluorescence: cells were fixed with 4% paraformaldehyde for 10 min at RT, permeabilized with 0.1% NP-40 for 10 min at RT then blocked with 5% BSA for 30 min at room temperature. Cells were stained with IRM001 anti-alpha Tubulin monoclonal antibody (red) at 1:400 and 4°C. DAPI (blue) was used as the nuclear counter stain.