

Catalog Number: IR252-1

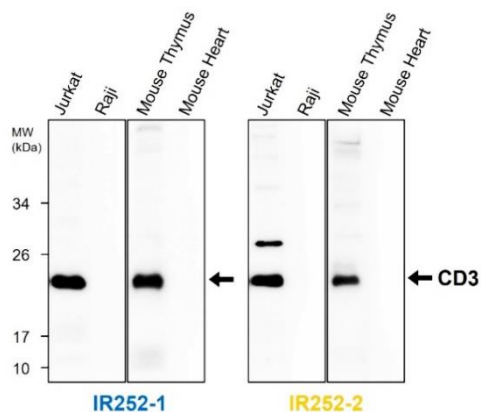
Anti-CD3 (Intracellular domain) antibody

Package size: 25, 100 μ l
Store at: -20°C
MW (kDa): 21 to 24

Overview

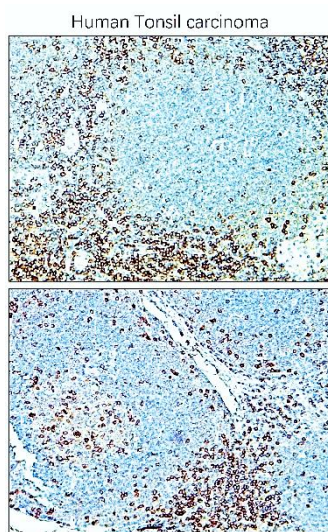
Product Name	CD3 (Intracellular domain) antibody
Product Number	IR252-1
Gene Description	CD3e molecule, epsilon (CD3-TCR complex)
Clonality	Polyclonal
Host	Rabbit
Species Reactivity	Human, Mouse, Rat
Recommended Applications Dilutions	Western Blot 1:1000 Immunofluorescence 1:300 – 1:400 Immunohistochemistry (Paraffin) 1:100 – 1:300 Flow Cytometry 1:100
Storage Buffer	100mM Tris Glycine, 20% Glycerol (pH7). 0.025% ProClin 300 was added as a preservative
Concentration	1.28 mg/ml
Purity	Affinity column purified
Storage	Store at +4°C for short term storage. Long time storage is recommended at -20°C
Notes	Gently mix before use. Optimal concentrations and conditions for each application should be determined by the user.

IR252-1 anti-CD3 antibody WB image



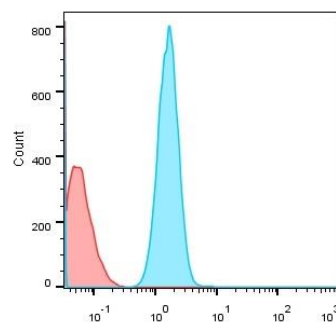
Anti-CD3 antibody at 1/1000 dilution. Lysates at 40 μ g per lane. This blot was produced using a 15% SDS-PAGE. NC membrane was then blocked for an hour before being incubated with IR252-1 overnight at 4°C.

IR252-1 anti-CD3 antibody IHC image

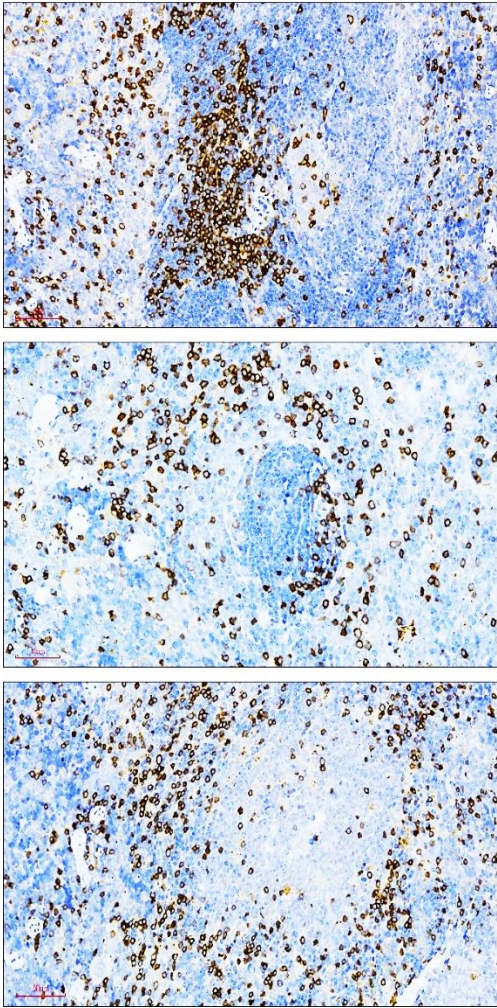
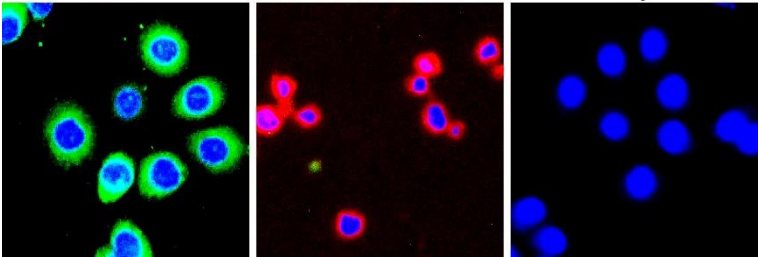
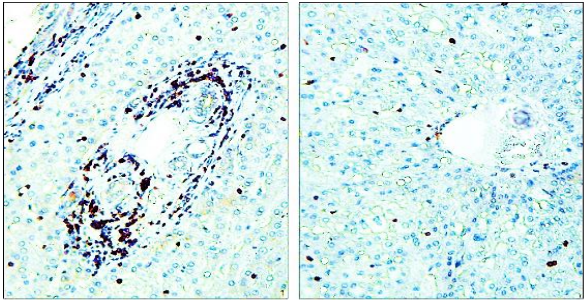


Immunohistochemical analysis of paraffin embedded Human cancer tissue labeling CD3 with IR252-1 at 1/200.

IR252-1 anti-CD3 antibody FACS image



Product: CD3 antibody
Catalog: IR252-1
Sample: Human peripheral blood anti-CD3 antibody at 1:100

<div>Customer feedback</div> <div>IR252-1 anti-CD3 antibody IHC image</div> <div><div>Mouse spleen</div></div>	<div>Customer feedback</div> <div>IR252-1 anti-CD3 antibody ICC/IF image</div> <div><div>MOLT-4JurkatRaji</div></div> <div>Immunofluorescence: cells were fixed with 4% paraformaldehyde for 10 min at RT, permeabilized with 0.1% NP-40 for 10 min at RT then blocked with 5% BSA for 30 min at room temperature. Cells were stained with IR252-1 anti-CD3 antibody at 1:200 and 4°C. DAPI (blue) was used as the nuclear counter stain.</div> <div>Customer feedback</div> <div>IR252-1 anti-CD3 antibody IHC image</div> <div></div> <div>Immunohistochemical analysis of paraffin embedded mouse tissue labeling CD3 with IR252-1 at 1/100 RT 1hr. Epitope Retrieval methods: Citrate Buffer, pH 6.0 Data from: Li-Tzung Biotechnology. Co</div> <div>Immunohistochemical analysis of paraffin embedded Human tissue labeling CD3 with IR252-1 at 1/100.</div>
---	--

IReal Biotechnology Co., Ltd.