

Catalog Number: IR240-864

## Anti-CD206 / MRC1 / Mannose Receptor antibody

Package size: 25, 100  $\mu$ l  
Store at: -20°C  
MW (kDa): 180-190

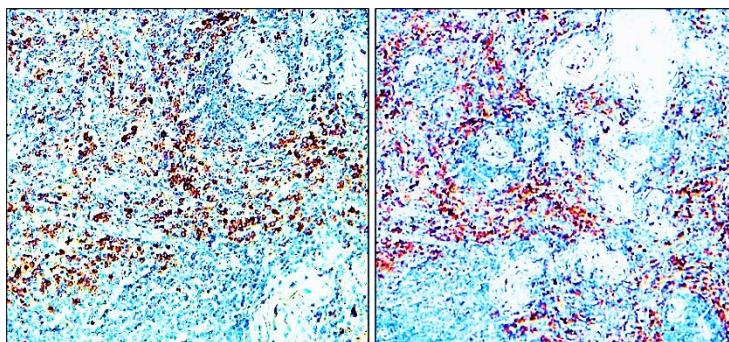
### Overview

<b>Product Name</b>	CD206 / MRC1 / Mannose Receptor antibody
<b>Product Number</b>	IR240-864
<b>Gene Description</b>	mannose receptor, C type 1 / MRC1
<b>Clonality</b>	Polyclonal
<b>Host</b>	Rabbit
<b>Species Reactivity</b>	Human, mouse, rat
<b>Recommended Applications Dilutions</b>	Western Blot 1:1000 Immunofluorescence 1:200 – 1:300 Immunohistochemistry 1:100 – 1:200
<b>Storage Buffer</b>	100mM Tris Glycine, 20% Glycerol (pH7). 0.025% ProClin 300 was added as a preservative
<b>Concentration</b>	1.5 mg/ml
<b>Purity</b>	Affinity column purified
<b>Storage</b>	Store at +4°C for short term storage. Long time storage is recommended at -20°C
<b>Notes</b>	Gently mix before use. Optimal concentrations and conditions for each application should be determined by the user.

IR240-864 anti-CD206 / MRC1 / Mannose Receptor antibody WB image



IR240-864 anti-CD206 / MRC1 / Mannose Receptor antibody IHC image



**Anti-CD206 / MRC1 / Mannose Receptor antibody - at 1/1000 dilution.** Lysates at 50  $\mu$ g per lane. This blot was produced using a 5% SDS-PAGE. Nitrocellulose membrane was then blocked for an hour before being incubated with IR240-864 overnight at 4°C.

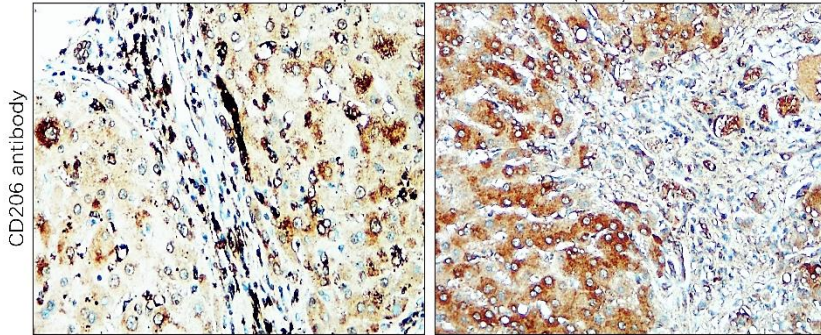
Immunohistochemical analysis of paraffin embedded human tissue labeling CD206 / MRC1 / Mannose Receptor with IR240-864 at 1/100.

**Sample:** Human Lymph node

**Antigen retrieval:** Tris EDTA pH.9

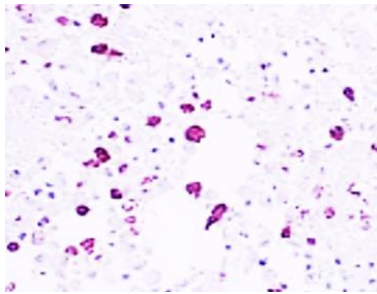
**IR240-864 anti-CD206 / MRC1 / Mannose Receptor antibody IHC image**

Human Hepatocellular Carcinoma (HCC)



Immunohistochemical analysis of paraffin embedded human cancer tissue labeling CD206 / MRC1 / Mannose Receptor with IR240-864 at 1/100.  
Sample: Human Hepatocellular Carcinoma (HCC)

**Customer feedback  
IR240-864 anti-CD206 / MRC1 / Mannose Receptor  
antibody IHC image**

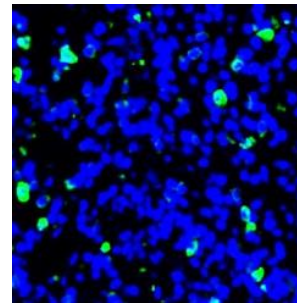


Immunohistochemical analysis of paraffin embedded human tissue labeling CD206 / MRC1 / Mannose Receptor with IR240-864 at 1/100.

**Sample:** Human lung

**Antigen retrieval:** Tris EDTA pH.9

**Customer feedback  
IR240-864 anti-CD206 / MRC1 / Mannose Receptor  
antibody IHC image**



Immunohistochemical analysis of paraffin embedded human tissue labeling CD206 / MRC1 / Mannose Receptor with IR240-864 at 1/100.

**Sample:** Mouse lung

**Antigen retrieval:** Tris EDTA pH.9

IReal Biotechnology Co., Ltd.



**ISO 13485:2016 Quality  
Management System  
Certified**

[www.irealbio.com](http://www.irealbio.com)  
 03-5260005  
[irealbio@irealbio.com](mailto:irealbio@irealbio.com)