

Catalog Number: IR84-366

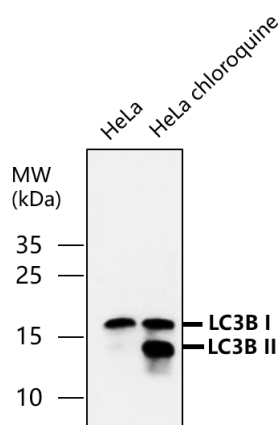
## Anti-LC3B antibody

Package size: 25, 100  $\mu$ l  
Store at: -20°C  
MW (kDa): 14, 16

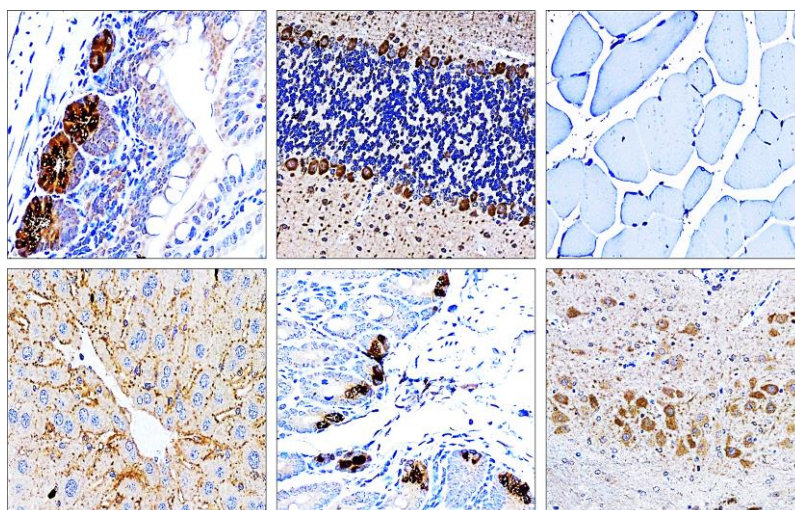
### Overview

Product Name	LC3B antibody
Product Number	IR84-366
Gene Description	microtubule-associated protein 1 light chain 3 beta
Clonality	Polyclonal
Host	Rabbit
Species Reactivity	Human, mouse, rat
Recommended Applications Dilutions	Western Blot 1:1000 – 1:2000 Immunofluorescence 1:200 – 1:500 Immunohistochemistry (Paraffin) 1:100 – 1:300
Storage Buffer	100mM Tris Glycine, 1% BSA, 20% Glycerol (pH7). 0.025% ProClin 300 was added as a preservative
Concentration	1.07 mg/ml
Purity	Affinity column purified
Storage	Store at +4°C for short term storage. Long time storage is recommended at -20°C
Notes	Gently mix before use. Optimal concentrations and conditions for each application should be determined by the user.

#### IR84-366 anti-LC3B antibody WB image



#### Customer feedback IR84-366 anti-LC3B antibody IHC image



#### LC3B antibody at 1/1000 dilution.

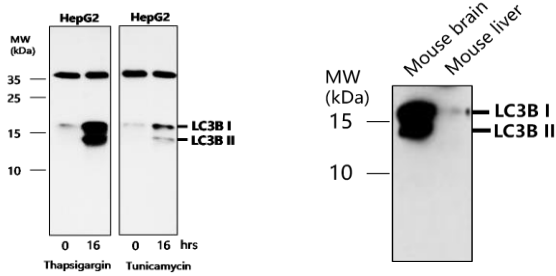
Lysates at 40  $\mu$ g per lane. This blot was produced using a 15% SDS-PAGE. NC membrane was then blocked for an hour before being incubated with IR84-366 overnight at 4°C.

Immunohistochemical analysis of paraffin embedded mouse tissue labeling LC3B with IR84-366 at 1/200.

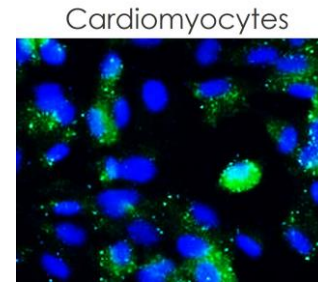
Epitope Retrieval methods: Citrate Buffer, pH 6.0

Data from: [Li-Tzung Biotechnology Co](http://Li-Tzung Biotechnology Co)

### IR84-366 anti-LC3B antibody WB image



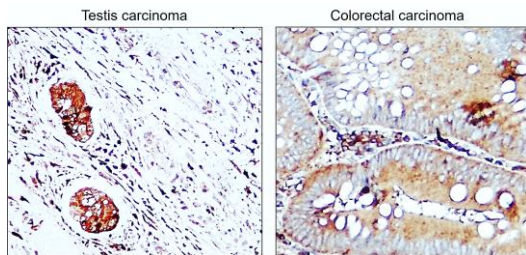
### IR84-366 anti-LC3B antibody ICC/IF image



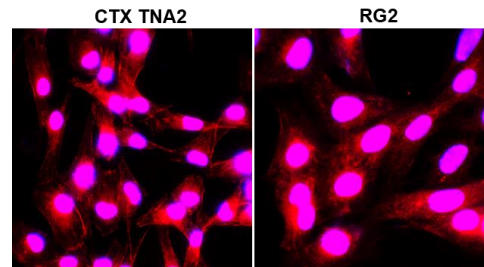
**LC3B antibody at 1/1000 dilution.**  
Lysates/proteins at 50 µg per lane  
This blot was produced using a 15% SDS-PAGE. Nitrocellulose membrane was then blocked for an hour before being incubated with IR84-366 overnight at 4°C.

Immunofluorescence: cells were fixed with 4% paraformaldehyde for 10 min at RT, permeabilized with 0.1% NP-40 for 10 min at RT then blocked with 5% BSA for 30 min at room temperature. Cells were stained with IR84-366 anti-LC3B antibody (red) at 1:200 and 4°C. DAPI (blue) was used as the nuclear counter stain.

### IR84-366 anti-LC3B antibody IHC image



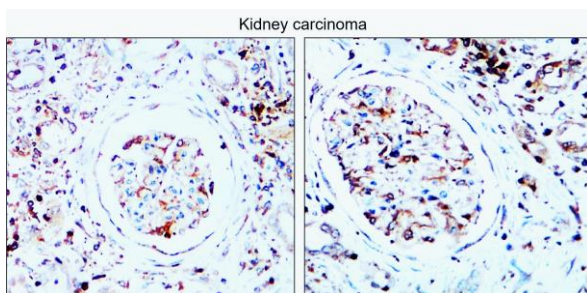
### IR84-366 anti-LC3B antibody ICC/IF image



Immunohistochemical analysis of paraffin embedded Human testis and colorectal cancer tissue labeling LC3B with IR84-366 at 1/100.

Immunofluorescence: cells were fixed with 4% paraformaldehyde for 10 min at RT, permeabilized with 0.1% NP-40 for 10 min at RT then blocked with 5% BSA for 30 min at room temperature. Cells were stained with IR84-366 anti-LC3B antibody (red) at 1:200 and 4°C. DAPI (blue) was used as the nuclear counter stain.

### IR84-366 anti-LC3B antibody IHC image



Immunohistochemical analysis of paraffin embedded Human cancer tissue labeling LC3B with IR84-366 at 1/100.