

Catalog Number: IRM210

Anti-Human Serum Albumin antibody [17E2]

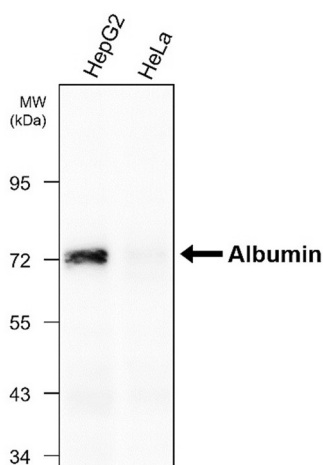
Package size: 25, 100 µl
Store at: -20°C
MW (kDa): 72

Overview

Product Name	Human Serum Albumin antibody [17E2]
Product Number	IRM210
Clonality	Monoclonal
Host	Mouse (mouse IgG1)
Species Reactivity	Human
Recommended Applications Dilutions	Western Blot 1:1000-1:2000 Immunofluorescence 1:200 – 1:500
Storage Buffer	Phosphate-buffered solutions, pH 7.2, 50% Glycerol, 0.025% ProClin 300 was added as a preservative
Concentration	1mg/ml
Purity	Protein A column purified
Storage	Long time storage is recommended at -20°C
Notes	Gently mix before use. Optimal concentrations and conditions for each application should be determined by the user.

Image

IRM210 Human Serum Albumin antibody [17E2] WB image



Anti- Human Serum Albumin antibody [17E2] at 1/1000 dilution

Lysates at 30 µg per lane.
This blot was produced using a 10% SDS-PAGE. The gel was run at 140V for 50 minutes before being transferred onto a Nitrocellulose membrane at 18V for 60 minutes. The membrane was then blocked for an hour before being incubated with IRM210 overnight at 4°C.

IRReal Biotechnology Co., Ltd.