

Catalog Number: IR39-123

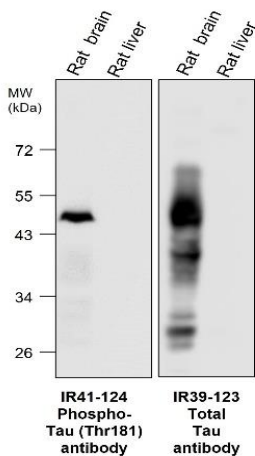
Anti-Tau antibody

Package size: 25, 100 μ l
Store at: -20°C
MW (kDa): 25 to 70

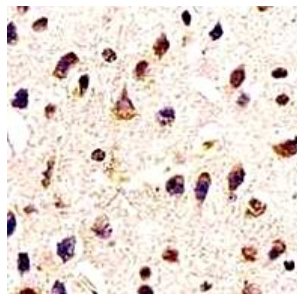
Overview

Product Name	Tau antibody
Product Number	IR39-123
Gene Description	microtubule-associated protein tau
Clonality	Polyclonal
Host	Rabbit
Species Reactivity	Human, mouse, rat
Recommended Applications Dilutions	Western Blot 1:3000 – 1:5000 Immunofluorescence 1:200 – 1:500 Immunohistochemistry (Paraffin) 1:500 – 1:2000 Immunohistochemistry (Frozen) 1:500 – 1:1000
Storage Buffer	100mM Tris Glycine, 20% Glycerol (pH7). 0.025% ProClin 300 was added as a preservative
Concentration	1.12 mg/ml
Purity	Affinity column purified
Storage	Store at +4°C for short term storage. Long time storage is recommended at -20°C
Notes	Gently mix before use. Optimal concentrations and conditions for each application should be determined by the user.

**IR39-123 anti-Tau antibody
WB image**

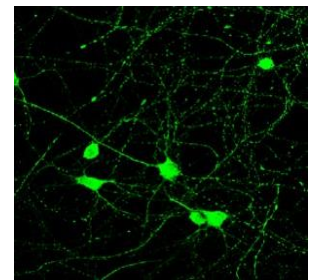


**IR39-123 anti-Tau antibody
IHC image**



Immunohistochemical analysis of paraffin embedded Human astrogloma tissue labeling Tau with IR39-123 at 1/300.

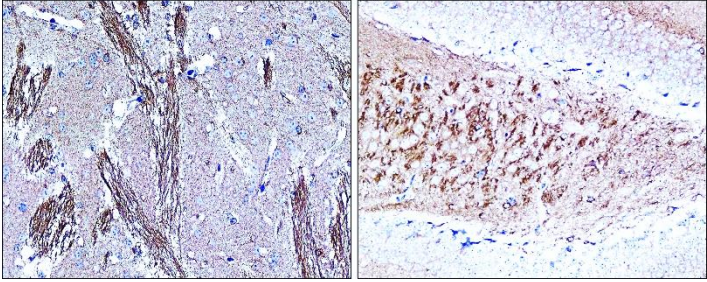
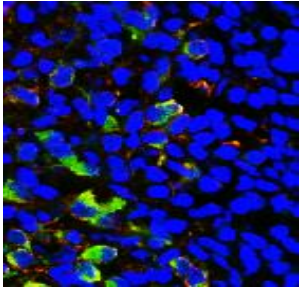
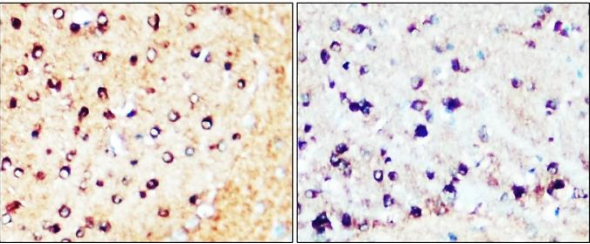
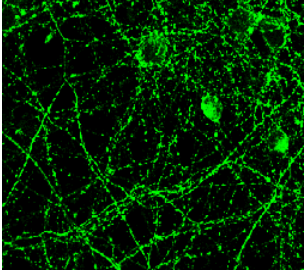
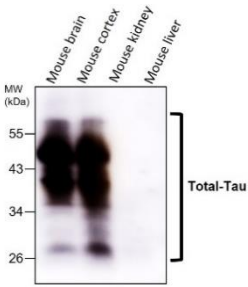

**IR39-123 anti-Tau antibody
IF image**



Immunofluorescent analysis.
Sample : primary cortical neurons
Tau antibody (IR39-123) : 1-300
Anti-rabbit 488 : 1-500
Fixed : 4% paraformaldehyde at RT for 20 min.

Anti-Tau antibody

Lysates at 40 μ g per lane.
This blot was produced using a 10% SDS-PAGE. Nitrocellulose membrane was then blocked for an hour before being incubated with IR39-123 overnight at 4°C.

<p align="center">IR39-123 anti-Tau antibody IHC image</p> <p align="center">Mouse Alzheimer's brain</p> 	<p align="center">IR39-123 anti-Tau antibody IHC image</p> 
<p>Immunohistochemical analysis of paraffin embedded mouse Alzheimer's tissue labeling Tau with IR39-123 at 1/1000 RT 1hr. Epitope Retrieval methods: Citrate Buffer, pH 6.0 Data from: Li-Tzung Biotechnology. Co</p>	<p>Immunohistochemical of frozen sections. Sample : mouse cerebellum. Green : Tau antibody (IR39-123) : 1-300 DAPI (blue) was used as the nuclear counter stain.</p>
<p align="center">IR39-123 anti-Tau antibody IHC image</p> <p align="center">Human brain</p> 	<p align="center">IR39-123 anti-Tau antibody IF image</p> 
<p>Immunohistochemical analysis of paraffin embedded Human brain tissue labeling Tau with IR39-123 at 1/200.</p>	<p>Immunofluorescent analysis. Sample : primary cortical neurons Tau antibody (IR39-123) : 1-300 Fixed : 4% paraformaldehyde at RT for 20 min.</p>
<p align="center">IR39-123 anti-Tau antibody IHC image</p> 	<p align="center">IR39-123 anti-Tau antibody IF image</p> <p align="center">DBTRG-05MG</p> 
<p>Lysates at 45 µg per lane. This blot was produced using a 10% SDS-PAGE. Nitrocellulose membrane was then blocked for an hour before being incubated with IR39-123 overnight at 4°C.</p>	<p>Cells were fixed with 4% PFA for 10 min at RT, permeabilized with 0.1% NP-40 for 10 min at RT then blocked with 5% BSA for 30 min at RT. Cells were stained with IR39-123 anti-Tau antibody (red) at 1:200 and 4°C.</p>

IReal Biotechnology Co., Ltd.

