

Catalog Number: IR101-421

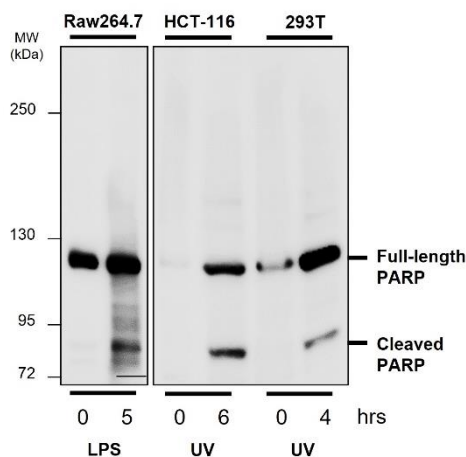
Anti-PARP1 antibody

Package size: 25, 100 μ l
Store at: -20°C
MW (kDa): 89, 115

Overview

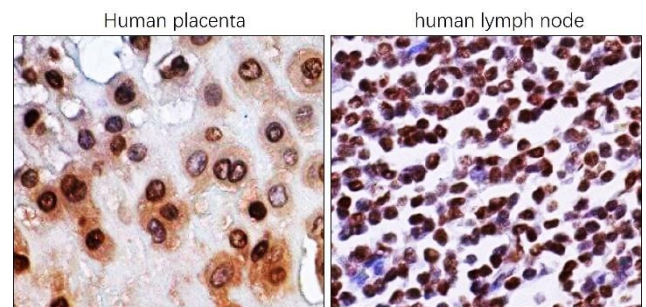
Product Name	PARP1 antibody
Product Number	IR101-421
Gene Description	poly (ADP-ribose) polymerase 1
Clonality	Polyclonal
Host	Rabbit
Species Reactivity	Human, mouse, rat
Recommended Applications Dilutions	Western Blot 1:1000 – 1:1500 Immunofluorescence 1:100 – 1:300 Immunohistochemistry (Paraffin) 1:100 – 1:150
Storage Buffer	100mM Tris Glycine, 1% BSA, 20% Glycerol (pH7). 0.025% ProClin 300 was added as a preservative
Concentration	0.59 mg/ml
Purity	Affinity column purified
Storage	Store at +4°C for short term storage. Long time storage is recommended at -20°C
Notes	Gently mix before use. Optimal concentrations and conditions for each application should be determined by the user.

IR101-421 anti-PARP antibody WB image



Anti-PARP1 antibody - 1/1000 dilution. Lysates at 40 μ g per lane. This blot was produced using a 5% SDS-PAGE. Nitrocellulose membrane was then blocked an hour before being incubated with IR101-421 overnight at 4°C.

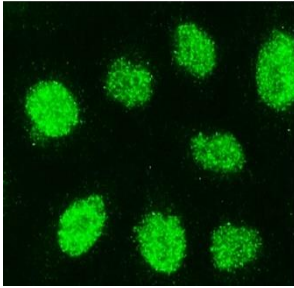
IR101-421 anti-PARP antibody IHC image



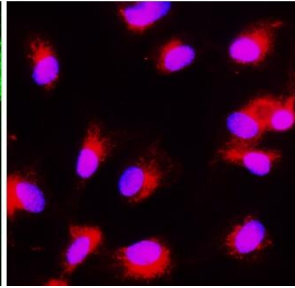
Immunohistochemical analysis of paraffin embedded Human cancer tissue labeling PARP1 cleaved with IR101-421 at 1/200.

IR101-421 anti-PARP antibody ICC/IF image

HeLa

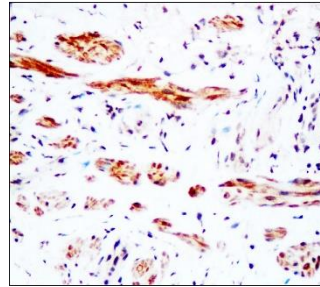


HUVEC

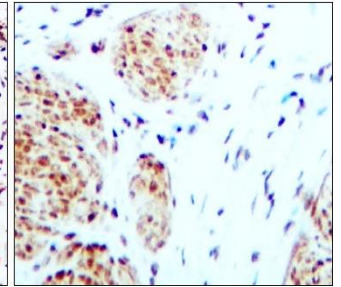


IR101-421 anti-PARP antibody IHC image

Gastric carcinoma



Colon carcinoma



Immunofluorescence: cells were fixed with 4% PFA for 10 min at RT, permeabilized with 0.1% NP-40 for 10 min at RT then blocked with 5% BSA for 30 min at RT. Cells were stained with IR101-421 anti- PARP cleaved antibody (red) at 1:300 and 4°C. DAPI (blue) was used as the nuclear counter stain.

Immunohistochemical analysis of paraffin embedded Human cancer tissue labeling PARP1 cleaved with IR101-421 at 1/200.

iReal Biotechnology Co., Ltd.

iReal Antibodies



**ISO 13485:2016 Quality
Management System
Certified**

www.irealbio.com

03-5260005

irealbio@irealbio.com