

Catalog Number: IR31-90

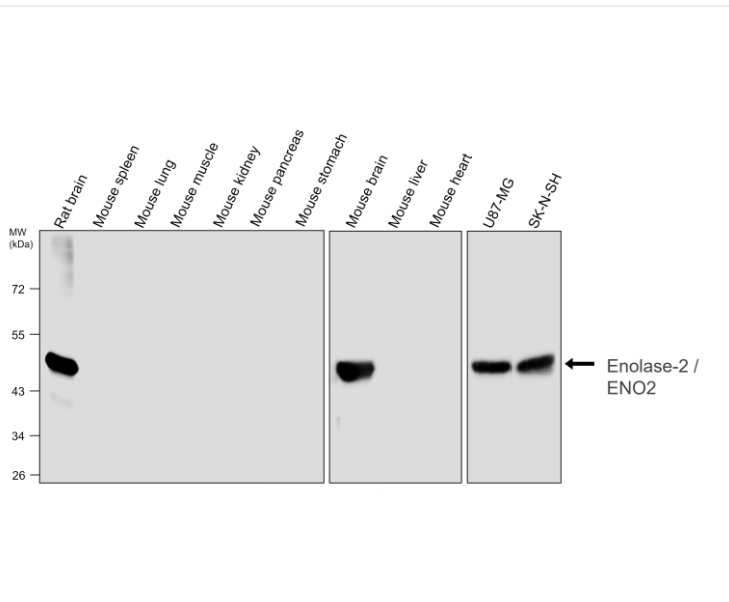
Anti-NSE / Enolase-2 antibody

Package size: 25, 100 μ l
Store at: -20°C
MW (kDa): 47

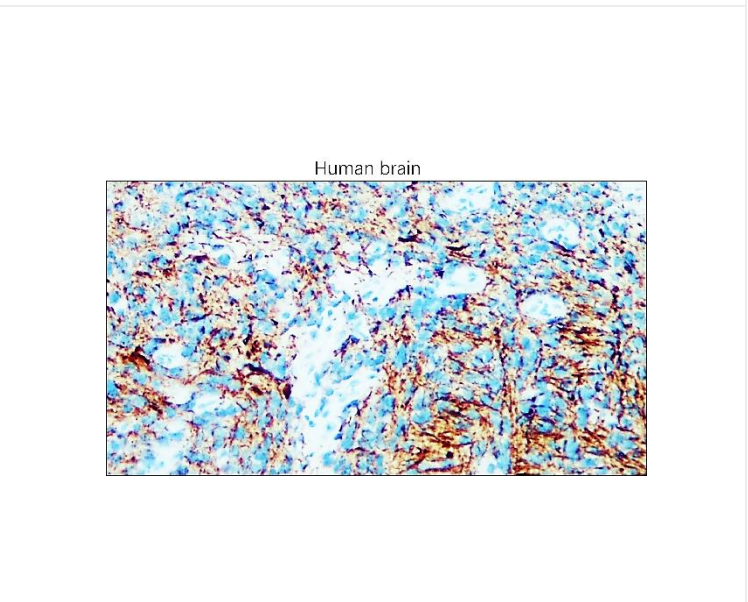
Overview

Product Name	NSE / Enolase-2 antibody
Product Number	IR31-90
Clonality	Polyclonal
Host	Rabbit
Species Reactivity	Human, Mouse, Rat
Recommended Applications Dilutions	Western Blot 1:2000– 1:14000 Immunofluorescence 1:500 – 1:1000 Immunohistochemistry (Paraffin) 1:400 – 1:600
Storage Buffer	100mM Tris Glycine, 20% Glycerol (pH7). 0.025% ProClin 300 was added as a preservative
Concentration	1.5 mg/ml
Purity	Affinity column purified
Storage	Store at +4°C for short term storage. Long time storage is recommended at -20°C
Notes	Gently mix before use. Optimal concentrations and conditions for each application should be determined by the user.

IR31-90 anti-NSE / Enolase-2 antibody WB image



IR31-90 anti- NSE / Enolase-2 antibody IHC image



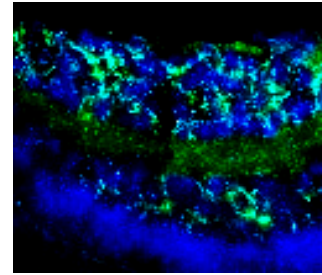
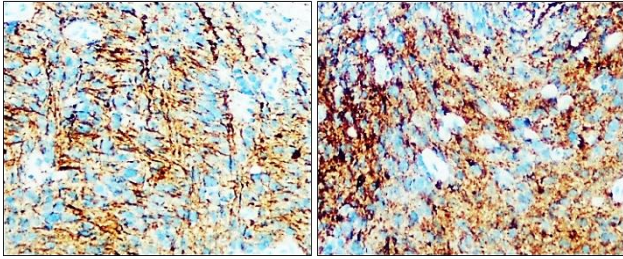
Anti-NSE / Enolase-2 antibody at 1/3000 dilution

Lysates at 30 μ g per lane. This blot was produced using a 10% SDS-PAGE. The gel was run at 140V for 50 minutes before being transferred onto a Nitrocellulose membrane was then blocked for an hour before being incubated with IR31-90 overnight at 4°C.

Immunohistochemical analysis of paraffin embedded human brain tissue labeling **NSE / Enolase-2** with IR31-90 at 1/400.

IR31-90 anti- NSE / Enolase-2 antibody IHC image

Human brain



Immunohistochemical analysis of paraffin embedded human brain tissue labeling NSE / Enolase-2 with IR31-90 at 1/400.

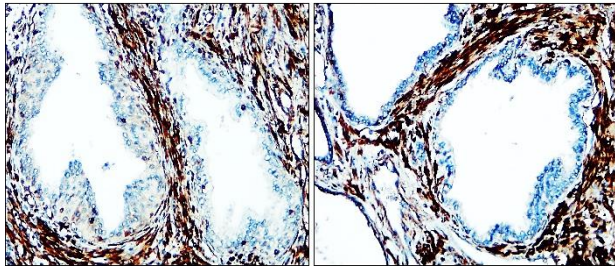
Immunohistochemistry (Frozen sections)

Sample: mouse retina tissue sections

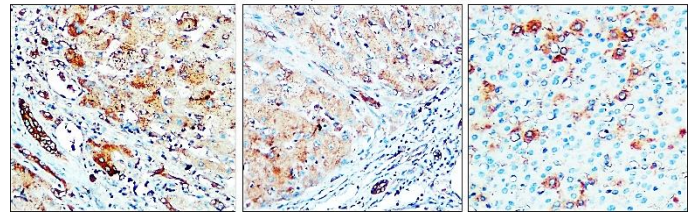
Antibody: NSE / Enolase-2 / ENO2 antibody (IR31-90) at 1/500 dilution

IR31-90 anti- NSE / Enolase-2 antibody IHC image

Human prostate cancer



Human hepatocellular carcinoma

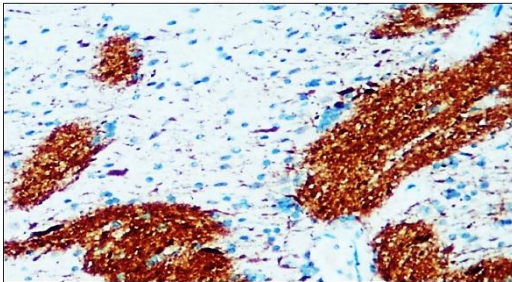


Immunohistochemical analysis of paraffin embedded Human prostate cancer tissue labeling NSE / Enolase-2 with IR31-90 at 1/400.

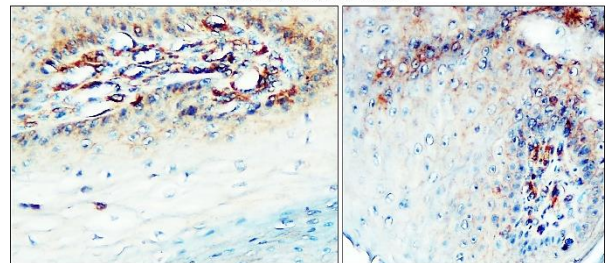
Immunohistochemical analysis of paraffin embedded Human hepatocellular carcinoma tissue labeling NSE / Enolase-2 with IR31-90 at 1/400.

IR31-90 anti- NSE / Enolase-2 antibody IHC image

Human brain



Human stomach cancer

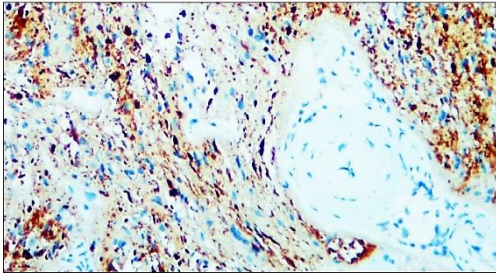


Immunohistochemical analysis of paraffin embedded human brain tissue labeling NSE / Enolase-2 with IR31-90 at 1/400.

Immunohistochemical analysis of paraffin embedded Human stomach cancer tissue labeling NSE / Enolase-2 with IR31-90 at 1/400.

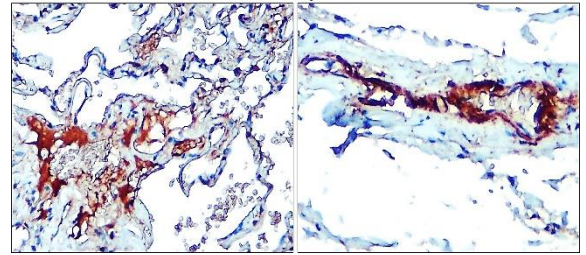
IR31-90 anti- NSE / Enolase-2 antibody IHC image

Human brain



Immunohistochemical analysis of paraffin embedded human brain tissue labeling NSE / Enolase-2 with IR31-90 at 1/400.

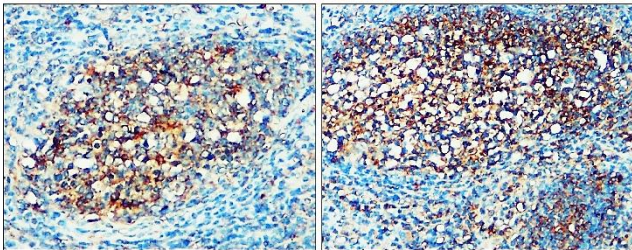
Human lung cancer



Immunohistochemical analysis of paraffin embedded Human lung cancer tissue labeling NSE / Enolase-2 with IR31-90 at 1/400.

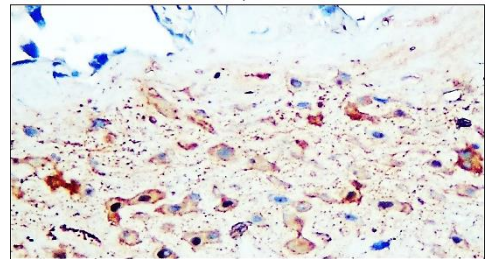
IR31-90 anti- NSE / Enolase-2 antibody IHC image

Human Tonsillar malignancy



Immunohistochemical analysis of paraffin embedded Human Tonsillar malignancy tissue labeling NSE / Enolase-2 with IR31-90 at 1/400.

Human placenta



Immunohistochemical analysis of paraffin embedded human placenta tissue labeling NSE / Enolase-2 with IR31-90 at 1/400.

IReal Biotechnology Co., Ltd.

 **iReal Antibodies**



**ISO 13485:2016 Quality
Management System
Certified**

 www.irealbio.com

 03-5260005

 irealbio@irealbio.com