

Catalog Number: IR31M53

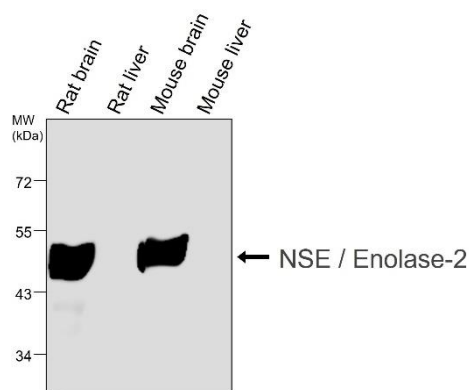
## Anti-NSE / Enolase-2 monoclonal antibody [12F]

Package size: 25, 100  $\mu$ l  
Store at: -20°C  
MW (kDa): 47

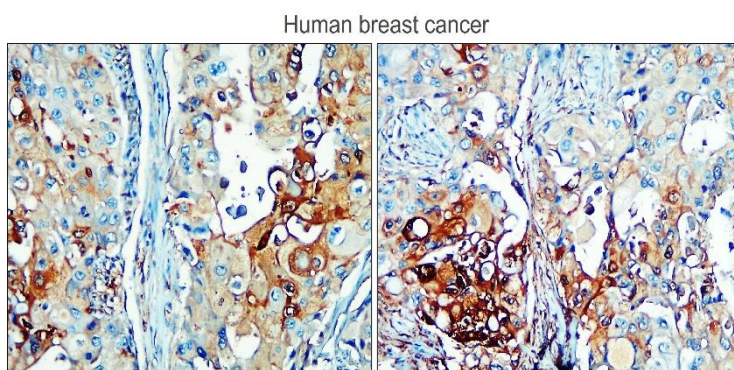
### Overview

Product Name	NSE / Enolase-2 monoclonal antibody [12F]
Product Number	IR31M53
Clonality	Monoclonal / mouse IgG1
Host	Mouse
Species Reactivity	Human, Mouse, Rat
Recommended Applications Dilutions	Western Blot 1:1000– 1:12000 Immunofluorescence 1:500 – 1:1000 Immunohistochemistry (Paraffin) 1:200 – 1:400
Storage Buffer	Phosphate-buffered solution, pH 7.2, 50% Glycerol (pH7). 0.025% ProClin 300 was added as a preservative
Concentration	1 mg/ml
Purity	Affinity column purified
Storage	Store at +4°C for short term storage. Long time storage is recommended at -20°C
Notes	Gently mix before use. Optimal concentrations and conditions for each application should be determined by the user.

### IR31M53 anti-NSE / Enolase-2 monoclonal antibody [12F] WB image



### IR31M53 anti-NSE / Enolase-2 monoclonal antibody [12F] IHC image



**Anti-NSE / Enolase-2 monoclonal antibody [12F] at 1/1000 dilution.** Lysates at 30  $\mu$ g per lane. This blot was produced using a 10% SDS-PAGE. The gel was run at 140V for 50 minutes before being transferred onto a Nitrocellulose membrane was then blocked for an hour before being incubated with IR31M53 overnight at 4°C.

Immunohistochemical analysis of paraffin embedded human breast cancer (TNBC) tissue labeling **NSE / Enolase-2** with IR31M53 at 1/200.