

Catalog Number: IR390-1

## Anti-ANO6 / TMEM16F antibody

Package size: 25, 100 µl

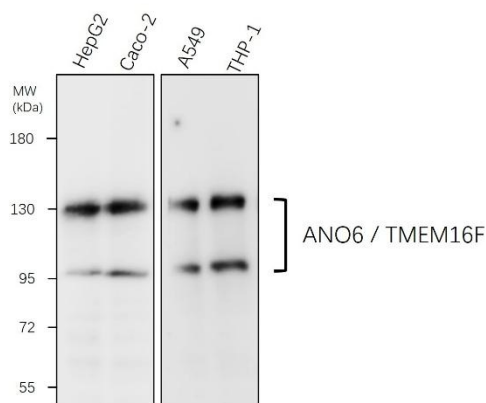
Store at: -20°C

MW (kDa): 275

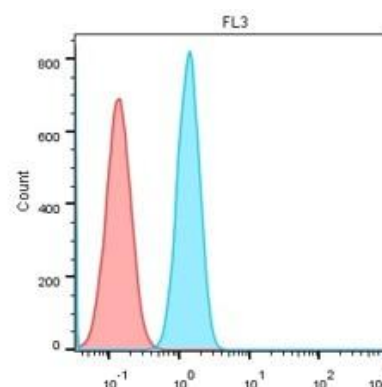
### Overview

Product Name	ANO6 / TMEM16F antibody
Product Number	IR390-1
Clonality	Polyclonal
Host	Rabbit
Species Reactivity	Human, Mouse
Recommended Applications Dilutions	Western Blot 1:2000 – 1:3000 Immunofluorescence 1:500 – 1:800 Flow Cytometry 1:200 – 1:400
Storage Buffer	100mM Tris Glycine, 20% Glycerol (pH7). 0.025% ProClin 300 was added as a preservative
Concentration	1.5 mg/ml
Purity	Affinity column purified
Storage	Long time storage is recommended at -20°C
Notes	Gently mix before use. Optimal concentrations and conditions for each application should be determined by the user.

IR390-1 anti-ANO6 / TMEM16F antibody  
WB image



IR390-1 anti-ANO6 / TMEM16F antibody  
FACS image



**Anti-ANO6 / TMEM16F antibody at 1/2000 dilution.**  
Lysates at 30 µg per lane, This blot was produced using a 7.5% SDS-PAGE. Nitrocellulose membrane was then blocked an hour before being incubated with IR390-1 overnight at 4° C.

Product: ANO6 / TMEM16F antibody: 1-300  
Catalog: IR390-1  
Cell: THP-1  
Anti-rabbit 488 : 1-1000