

# Product datasheet

WB

IF

Catalog Number: IRY25005

**Anti-mouse Enolase-1 / mENO1 IgY**

Package size: 25, 100 µl

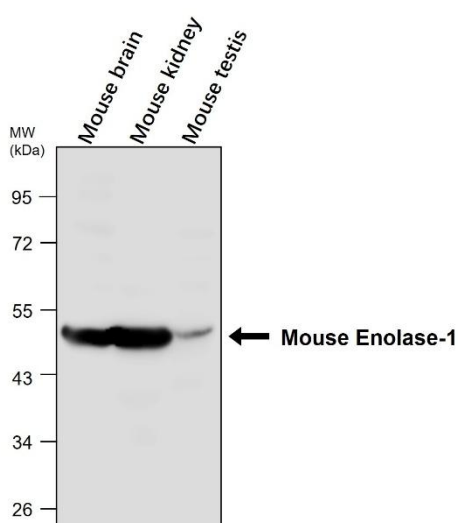
Store at: -20°C

MW (kDa): 47

## Overview

Product Name	mouse Enolase-1 / mENO1 IgY
Product Number	IRY25005
Clonality	Polyclonal IgY
Host	Chicken
Species Reactivity	Human, Mouse, Rat
Immunogen	Recombinant protein specific to mouse eno1 protein
Recommended Applications Dilutions	Western Blot 1:8000 – 1:10000 Immunofluorescence 1:1000 – 1:2000
Storage Buffer	Phosphate buffer, 30% Glycerol (pH7). 0.025% ProClin 300 was added as a preservative.
Concentration	3 mg/ml
Purity	Eggs collected and isolated the IgY fraction (purity 90-95%).
Storage	Long time storage is recommended at -20°C
Notes	Gently mix before use. Optimal concentrations and conditions for each application should be determined by the user.

## mouse Enolase-1 / mENO1 IgY WB image



**Anti-mouse Enolase-1 / mENO1 IgY - at 1/8000 dilution**  
 Lysates at 30 µg per lane.  
 This blot was produced using a 10% SDS-PAGE.  
 Nitrocellulose membrane was then blocked for an hour before being incubated with IRY25005 overnight at 4°C.

iReal Biotechnology Co., Ltd.

