

Catalog Number: IR323-1060

Anti Toll-like Receptot 3 antibody

Package size: 25, 100 µl

Store at: -20°C

MW (kDa): 100 to 130

Overview

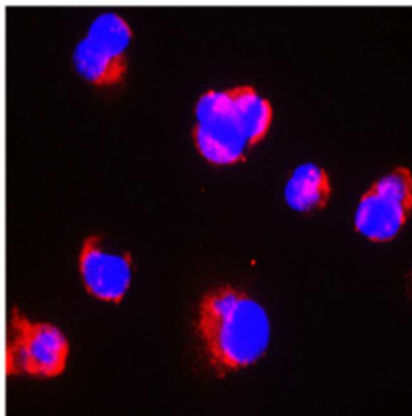
Product Name	Toll-like Receptor 3 antibody
Product Number	IR323-1060
Gene Description	toll-like receptor 3
Clonality	Polyclonal
Host	Rabbit
Species Reactivity	Human, Mouse, Rat
Recommended Applications Dilutions	Western Blot 1:500 – 1:1000 Immunofluorescence 1:300 – 1:500 Immunohistochemistry (Paraffin) 1:100 – 1:200
Storage Buffer	100mM Tris Glycine, 20% Glycerol (pH7). 0.025% ProClin 300 was added as a preservative
Concentration	1.51 mg/ml
Purity	Affinity column purified
Storage	Store at +4°C for short term storage. Long time storage is recommended at -20°C
Notes	Gently mix before use. Optimal concentrations and conditions for each application should be determined by the user.

IR323-1016 anti- Toll-like Receptor 3 antibody ICC/IF image

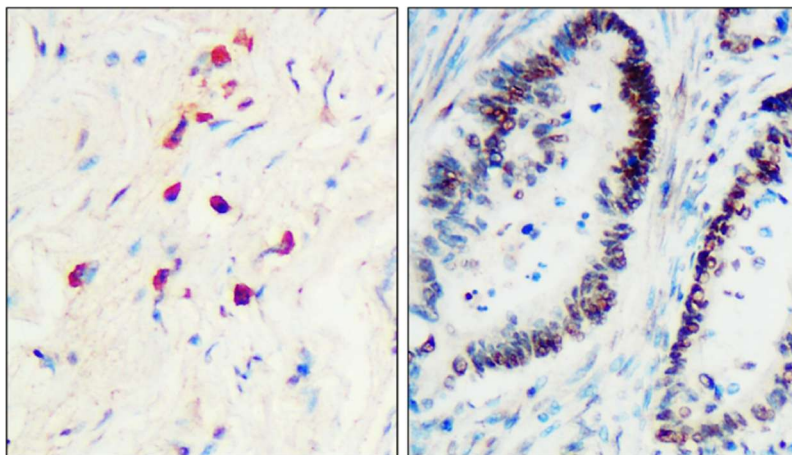
IR323-1016 anti- Toll-like Receptor 3 antibody IHC image

Toll like receptor 3

Jurkat



Immunofluorescence: cells were fixed with 4% paraformaldehyde for 10 min at RT, permeabilized with 0.1% NP-40 for 10 min at RT then blocked with 5% BSA for 30 min at room temperature. Cells were stained with IR323-1016 anti-Toll-like Receptor 3 antibody (red) at 1:400 and 4°C. DAPI (blue) was used as the nuclear counter stain.

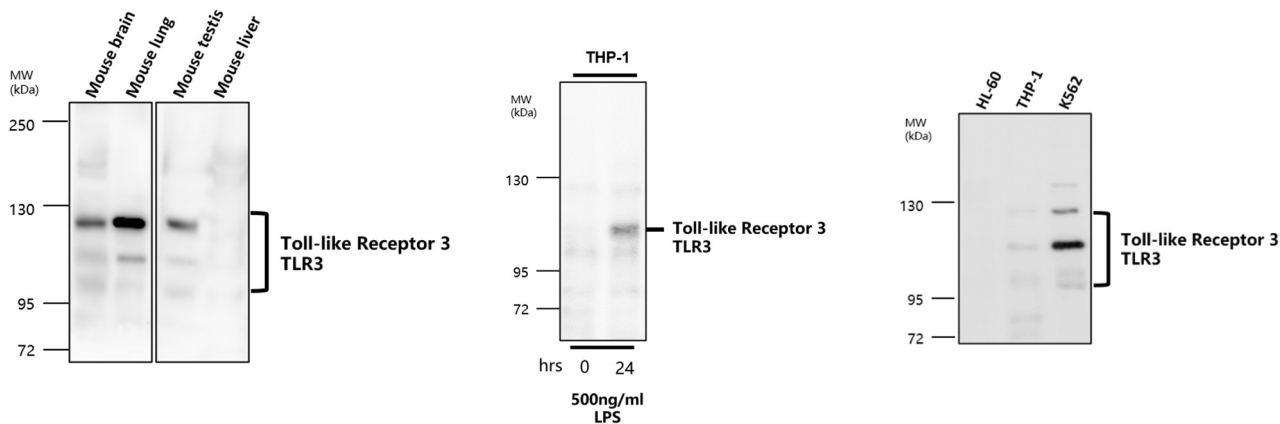


Immunohistochemical analysis of paraffin embedded Human cancer tissue labeling Toll-like Receptor 3 with IR323-1016 at 1/200.

IR323-1016 anti- Toll-like Receptor 3 antibody WB image

All lanes : Anti- Toll-like Receptor 3 antibody at 1/800 dilution

Lysates/proteins at 60 µg per lane
This blot was produced using a 5% SDS-PAGE. The gel was run at 140V for 50 minutes before being transferred onto a Nitrocellulose membrane at 18V for 60 minutes. The membrane was then blocked for an hour before being incubated with IR323-1016 overnight at 4°C.



IReal Biotechnology Co., Ltd.



ISO 13485:2016 Quality Management System Certified

www.irealbio.com

03-5260005

irealbio@irealbio.com